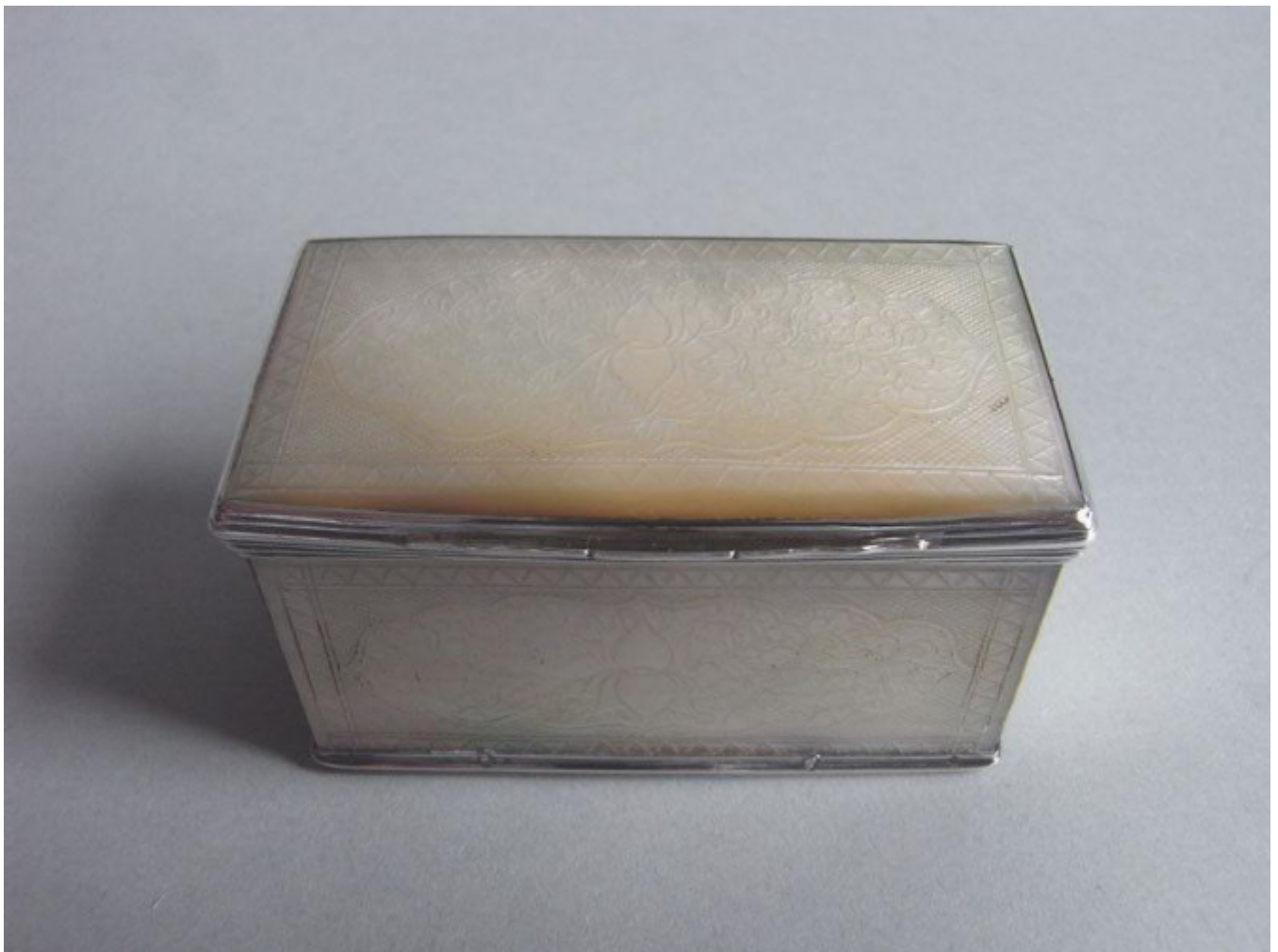


A Georgian silver mounted Mother of Pearl Snuff Box made circa 1830

Sold



REF: 153532

Height: 2 cm (0.8")

Width: 3 cm (1.2")

Depth: 2 cm (0.8")

## Description

The silver mounted box is rectangular in form with reeded silver mounts and serpentine shaped thumb piece. Each panel is engraved floral and foliate scroll work on a trellis work ground. Formerly in the Collection at Newby Hall, Yorkshire.