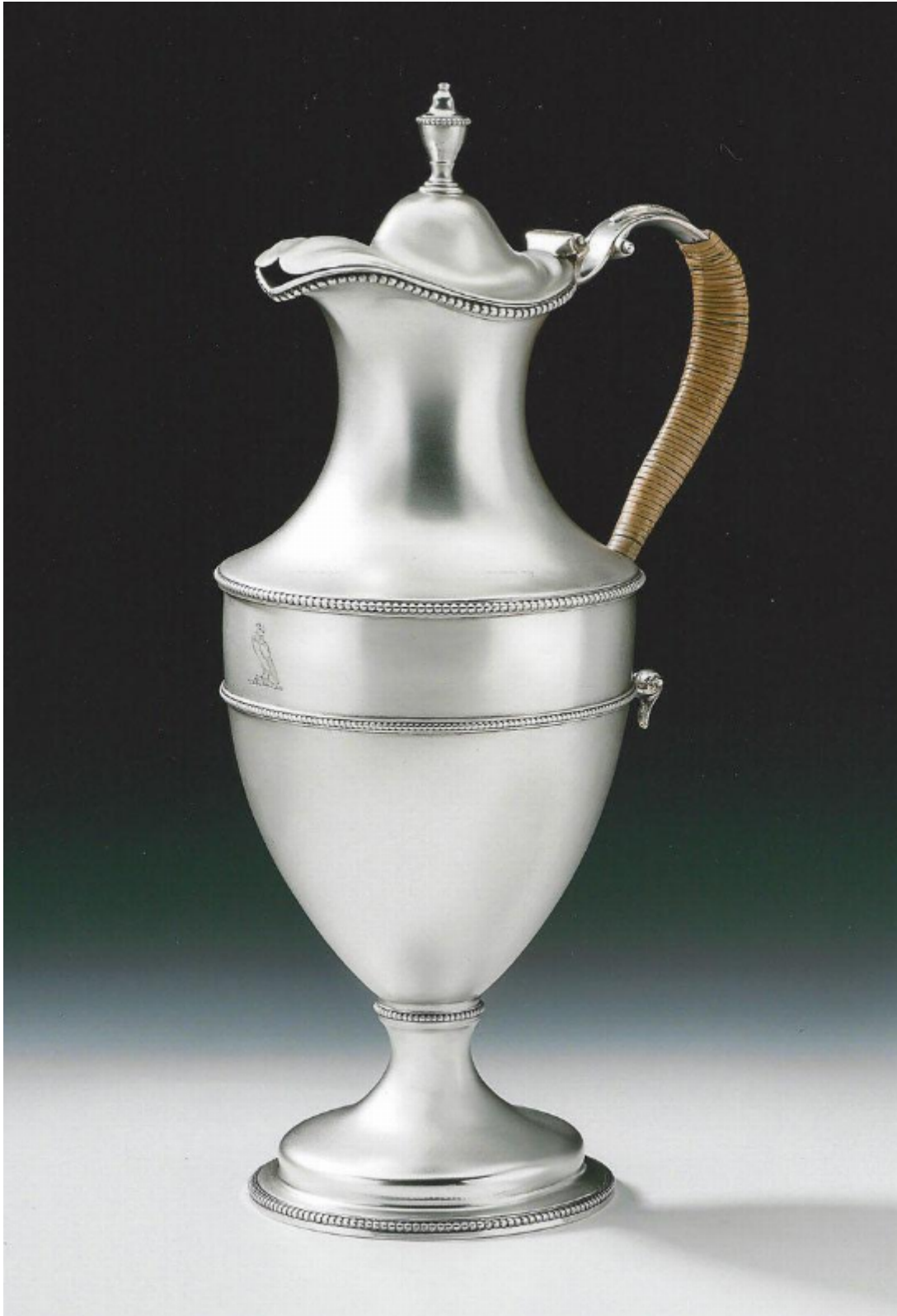


A very fine George III Water/Wine Ewer made in London in 1778 by Charles Wright.

Sold



REF: 182571

Description

The Ewer is of the Neo-Classical form and stands on a domed stepped circular foot. The main body is vase shaped and is decorated with various beaded bands, as is the rim. The high domed cover terminates in a beaded cast urn finial. The cast scroll handle is covered with its original wicker and the front of the main body is engraved with a contemporary Crest. The Ewer is fully marked in the base and with the sterling mark on the cover. This piece is in excellent condition and is of the finest quality in terms of both design and production.

Height: 12.75 inches, 31.88cm

Diameter at the widest point: 5 inches, 12.5cm

Total Weight: 30oz.