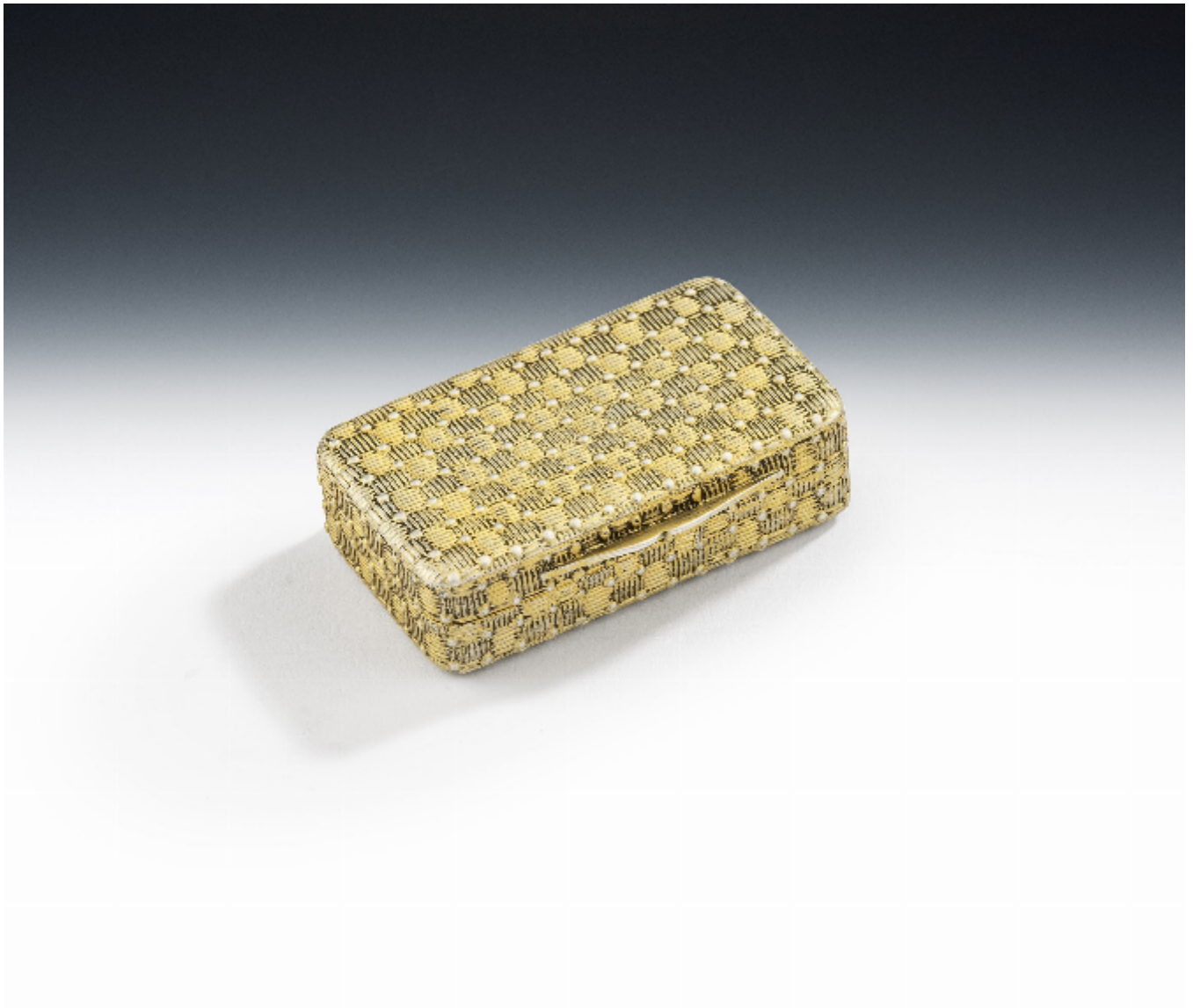


A fine & rare George III Cast Basket weave Snuff Box made in Birmingham in 1808 by Matthew Linwood.

Sold



REF: 374920

Description

This very fine example is palely gilded and is unusually cast. The box has a rectangular form and is decorated all over with basket weave designs, to simulate a wicker basket. This piece has a plain serpentine shaped thumb piece and the interior displays deep gilding. The box is in most excellent condition and is fully marked on the bezel. Cast basket weave boxes are very rare and this one was almost certainly made for a Lady. Length: 2.1 inches, 5.25 cm. Width: 1.25 inches, 3.13 cm. Height: 0.55 inches, 1.28 cm.